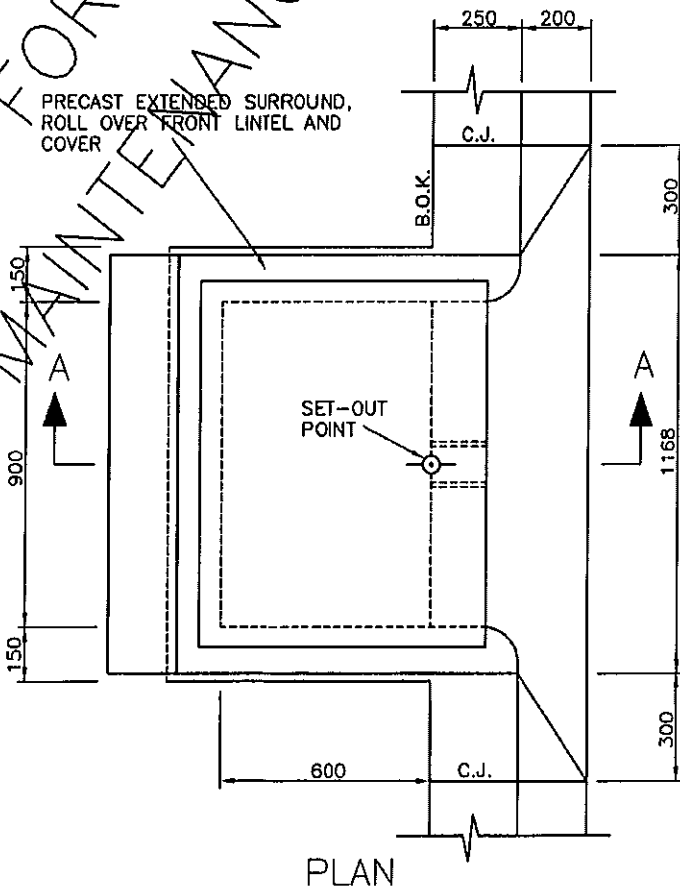


SECTION A-A

PRECAST EXTENDED SURROUND, ROLL OVER FRONT LINTEL AND COVER

**NOTES:**

1. ALL WALLS TO BE 150mm THICK.
2. WHERE PIPE DIA. EXCEEDS PIT WIDTH OR DEPTH EXCEEDS 2.0m REFER TO STD. DRAWING No. S255.
3. WEEPHOLE, 100mm DIA. IN THE WALL UNDER THE KERB & CHANNEL TO BE 100mm BELOW SUBGRADE LEVEL.
4. SHAPE PIT INVERT TO ONE THIRD OUTLET PIPE DIAMETER.
5. CONCRETE INFILL SUPPORT FOR KERB AND CHANNEL TO BE PROVIDED BETWEEN CONSTRUCTION JOINTS TO A DEPTH OF 100mm AT THE FACE OF THE PIT.
6. CONCRETE STRENGTH 25MPa AT 28 DAYS.
7. PROVIDE STEP IRONS FOR PIT DEPTH EXCEEDING 1.0m, REFER TO STD. DRAWING No. S275.



PLAN



SIDE ENTRY PIT(900x600)  
WITH A CAST IRON COVER  
FOR R.D.P. TYPE KERB & CHANNEL

DRAWN: V. NGUYEN

CHECKED: S.Q

AMENDMENTS: APRIL 2011

SCALE: 1:20

DATE: MAY 2011

BY: V. NGUYEN

APPROVED

*Sant*  
MANAGER  
ENGINEERING SERVICES  
DRAWING No.

S245