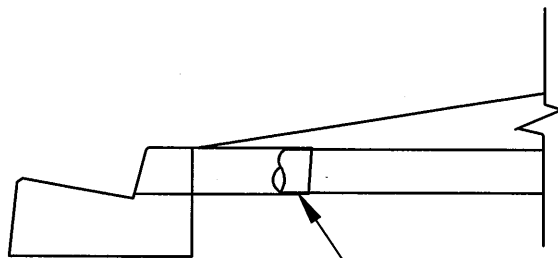
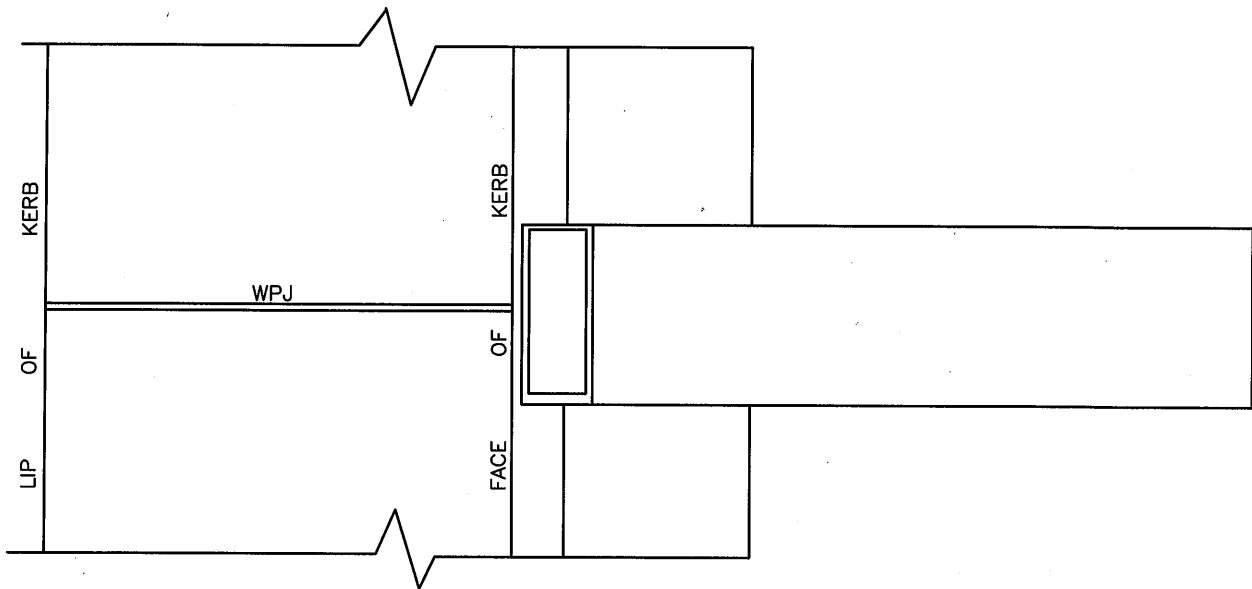


HOT DIPPED GALVANISED STEEL KERB ENTRY ADAPTOR
 MANUFACTURED FROM 127x127x4.9 SQUARE HOLLOW
 SECTION TO DIMENSIONS SHOWN WITH R10x75 WELDED
 AS SHOWN



100 ϕ HD STORMWATER UPVC SN10-DWV DRAIN TO BE
 INSERTED INTO SQUARE SECTION ADAPTOR
 AND SEALED WITH MORTAR



PROPERTY INLET TO KERB AND CHANNEL

APPROVED

for 
 MANAGER
 ENGINEERING SERVICES
 DRAWING No.

DRAWN: M BASILE

CHECKED: S.Q

AMENDMENTS: AUG 2018

SCALE: 1:20

DATE: AUG 2018

BY: M BASILE

S135