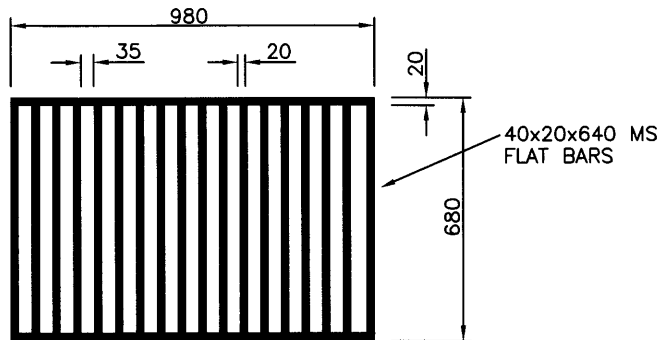
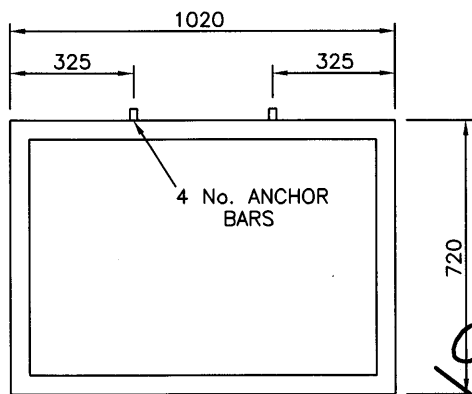


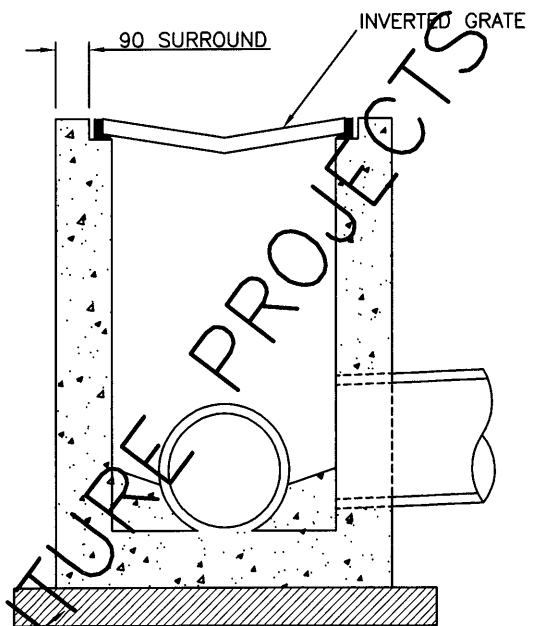
SECTION THROUGH GRATE



GRATE



GRATE FRAME

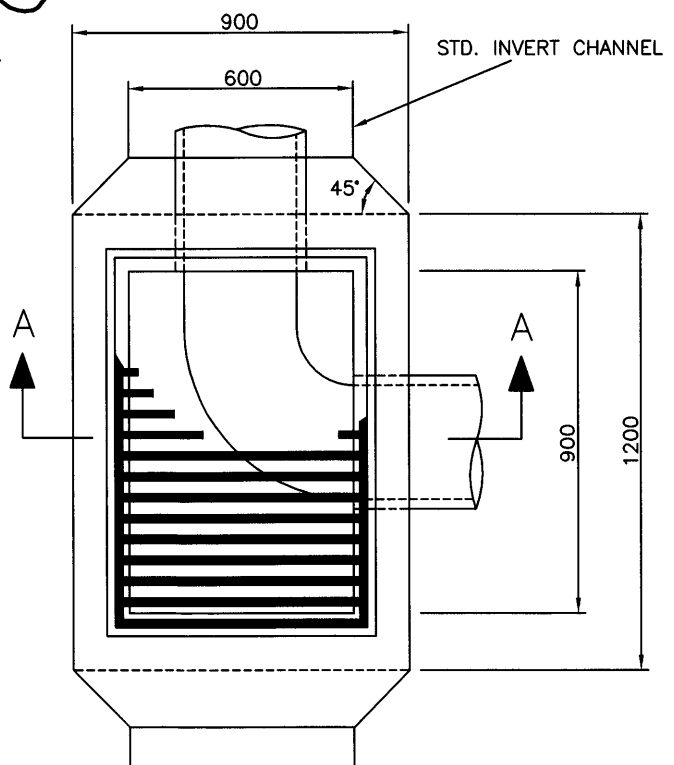


SECTION A-A

100mm LAYER OF COMPACTED CLASS 2 FCR

NOTES:

1. ALL WALLS TO BE 150mm THICK.
2. WHERE PIPE DIA. EXCEEDS PIT WIDTH OR DEPTH EXCEEDS 2.0m REFER TO STD. DRAWING No. S255.
3. WEEPHOLE, 100mm DIA. IN THE WALL AGAINST THE ROAD PAVEMENT TO BE 100mm BELOW SUBGRADE LEVEL.
4. SHAPE PIT INVERT TO ONE THIRD OUTLET PIPE DIAMETER.
5. GRATE FRAME SHALL BE CONSTRUCTED FROM 51x51x8 MS ANGLE. EACH CORNER SHALL BE WELDED ON UNDERSIDE OF HORIZONTAL LEG AND ON INSIDE OF VERTICAL LEG WITH SIZE 5 FILLET WELD.
4 No. Y12 BARS, 100 LONG WELDED TO FRAME WITH SIZE 5 FILLET WELD.
GRATE UNITS SHALL BE MADE FROM 40x20 MS RECTANGULAR BARS.
BOTH GRATE AND FRAME SHALL BE HOT DIP GALVANIZED.
6. SUBBASE DRAINAGE: 50mm DIA. CLASS 6 UPVC STUB, WHERE PIT IS AGAINST THE ROAD PAVEMENT.
7. PROVIDE STEP IRONS FOR PIT DEPTH EXCEEDING 1.0m, REFER TO STD. DRAWING No. S275.
8. CONCRETE STRENGTH 25MPa AT 28 DAYS.



PLAN

17/7/15



JUNCTION PIT(900x600)
WITH AN
INVERT GRATE TYPE A

APPROVED
Samsi.
for
MANAGER
ENGINEERING SERVICES
DRAWING No.

DRAWN: V. NGUYEN	CHECKED: S.Q	AMENDMENTS: JUL 2015
SCALE: 1:20	DATE: MAY 2011	BY: D. WORSLEY

S215