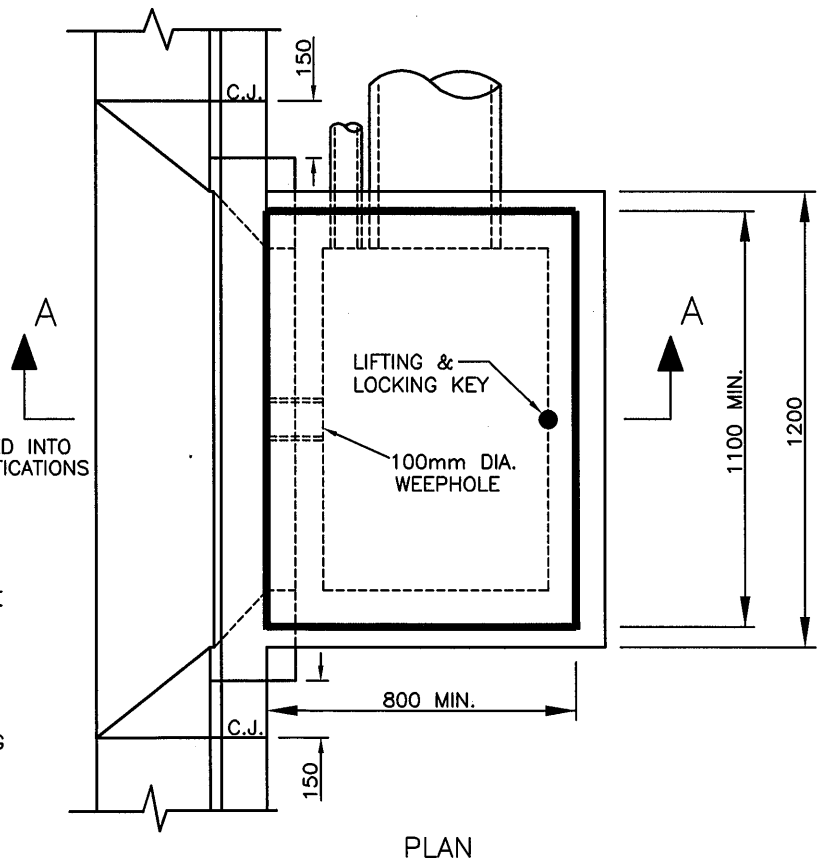


**NOTES:**

1. ALL WALLS TO BE 150mm THICK.
2. WHERE PIPE DIA. EXCEEDS PIT WIDTH OR DEPTH EXCEEDS 2.0m REFER TO STD. DRAWING No. S255.
3. WEEPHOLE, 100mm DIA. IN THE WALL UNDER THE KERB & CHANNEL TO BE 100mm BELOW SUBGRADE LEVEL.
4. SHAPE PIT INVERT TO ONE THIRD OUTLET PIPE DIAMETER.
5. FOR PRECAST CONCRETE LINTEL DETAILS REFER TO STD. DRAWING No. S265.
6. FIBRE COMPOSITE PIT LID AND FRAME SUITABLE FOR 900x600 INTERNAL PIT DIMENSIONS SECURED INTO PIT WALLS AS PER THE MANUFACTURER'S SPECIFICATIONS
  - a) LABELLED WITH AS3996 CLASS B
  - b) LOCKABLE WITH LIFTING MATCHING HANDLE
  - c) LIGHT WEIGHT – NO MORE THAN 25Kg FOR 900x600 PIT OR THE LIFTING & PULLING LOADS @ 15 DEGREES AND FOR LIFTING AT 30 DEGREE POSITION SHALL BE LESS THAN 25Kg TO THE MANUFACTURER'S SPECIFICATIONS.
7. CONCRETE STRENGTH 25MPa AT 28 DAYS.
8. PROVIDE STEP IRONS FOR PIT DEPTH EXCEEDING 1.0m, REFER TO STD. DRAWING No. S275.



**SIDE ENTRY PIT(900x600)**

APPROVED

*Sans*  
 for  
 MANAGER  
 ENGINEERING SERVICES  
 DRAWING No.

DRAWN: V.NGUYEN

CHECKED: S.Q

AMENDMENTS: APRIL 2014

SCALE: 1:20

DATE: APRIL 2014

BY: M.BASILE

**S200**