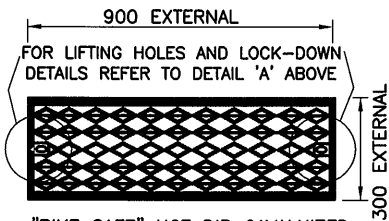
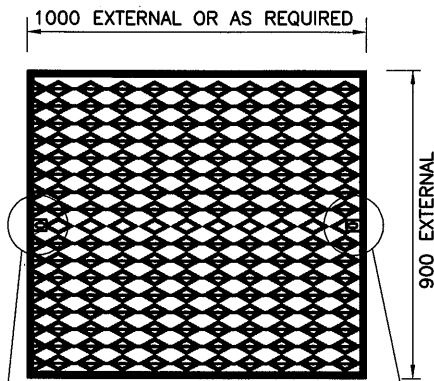


DETAIL 'A'



"BIKE SAFE" HOT DIP GALVANIZED CLASS D GRATING AND FRAME TO SUIT B2 KERB.

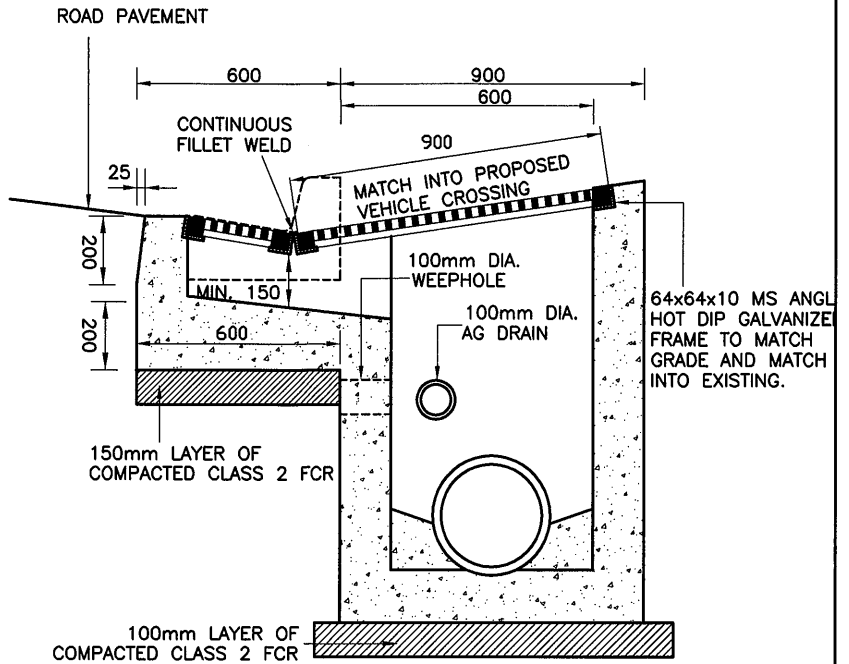
WEAVE GRATE



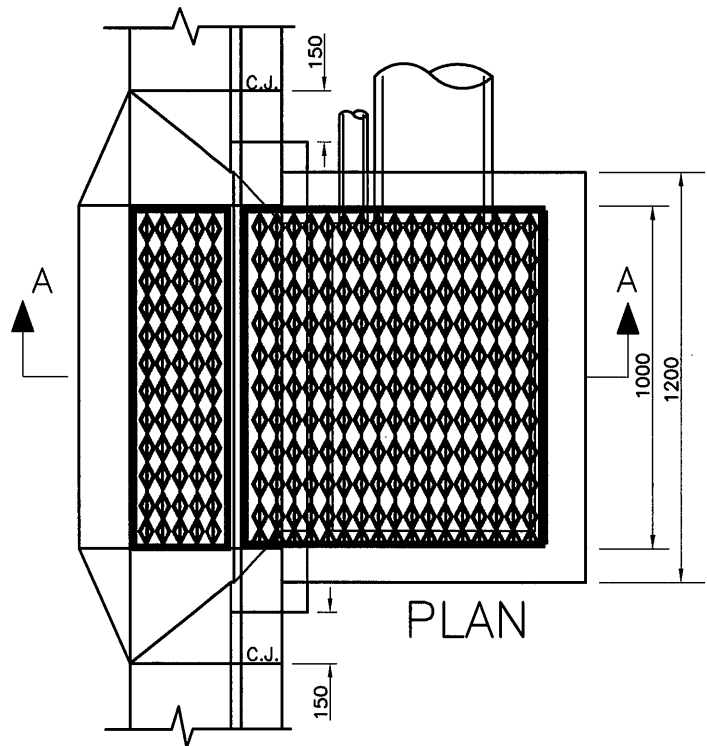
WEAVE GRATE

NOTES:

1. ALL WALLS TO BE 150mm THICK.
2. WHERE PIPE DIA. EXCEEDS PIT WIDTH OR DEPTH EXCEEDS 2.0m REFER TO STD. DRAWING No. S256.
3. WEEPHOLE, 100mm DIA. IN THE WALL UNDER THE KERB & CHANNEL TO BE 100mm BELOW SUBGRADE LEVEL.
4. GRATE TO COMPLY WITH AS 3996-CLASS D
5. CONTRACTOR IS TO CONFIRM THAT DIMENSIONS OF REQUIRED GRATE SUIT EXISTING CONDITIONS.
6. GRATES TO BE SECURED TO THE FRAME SO THAT THEY WILL NOT "KICK UP" WITH TRAFFIC LOADING.
7. SHAPE PIT INVERT TO ONE THIRD OUTLET PIPE DIAMETER.
8. CONCRETE STRENGTH 25MPa AT 28 DAYS.
9. PROVIDE STEP IRONS FOR PIT DEPTH EXCEEDING 1.0m, REFER TO STD. DRAWING No. S275.



SECTION A-A



PLAN



CHUTE ENTRY STRUCTURE AND GRATING COVER (VEHICLE CROSSING)

APPROVED

*R.P.H.*

MANAGER ENGINEERING SERVICES

DRAWING No.

S232

DRAWN: V. NGUYEN

CHECKED: S.Q

AMENDMENTS: JULY 2014

SCALE: 1:20

DATE: JULY 2014

BY: MURRAY BASILE