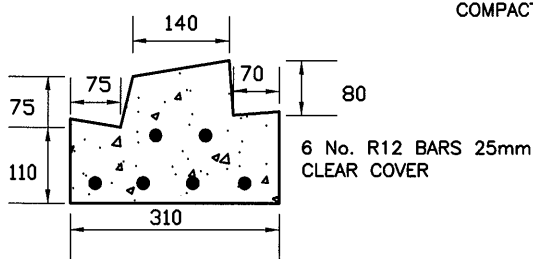


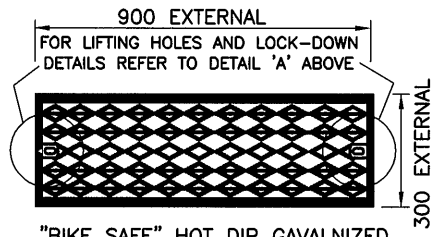
GRATE TO BE FITTED WITH 2 No. M10 BOLTS MINIMUM 50mm IN LENGTH PENETRATING INTO CONCRETE. ALLOW FOR COUNCIL BOLT HEAD SLEEVE OF 25mmØ TO BE FITTED LATER ON BY COUNCIL.

ALLOW VOID IN CONCRETE FOR M10 BOLT PENETRATION

DETAIL 'A'



LINTEL

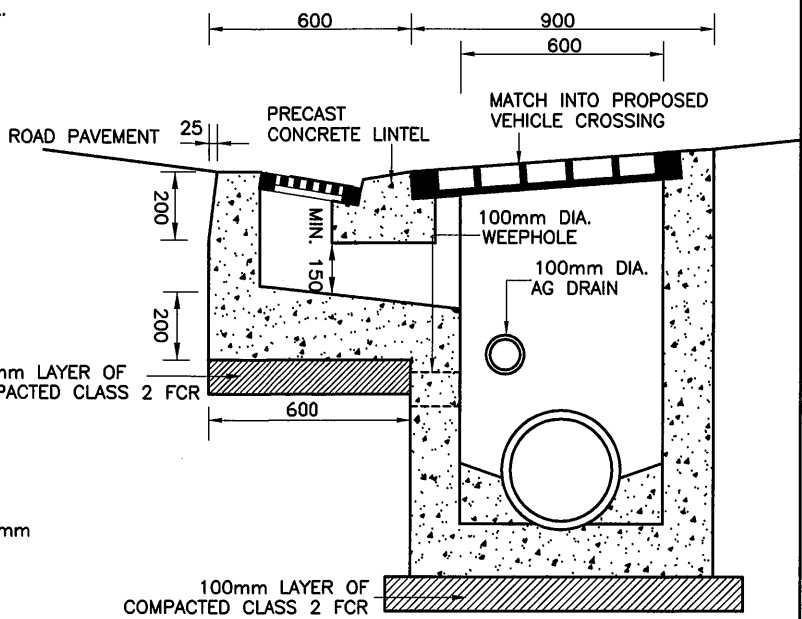


"BIKE SAFE" HOT DIP GALVANIZED CLASS D GRATING AND FRAME TO SUIT B2 KERB.

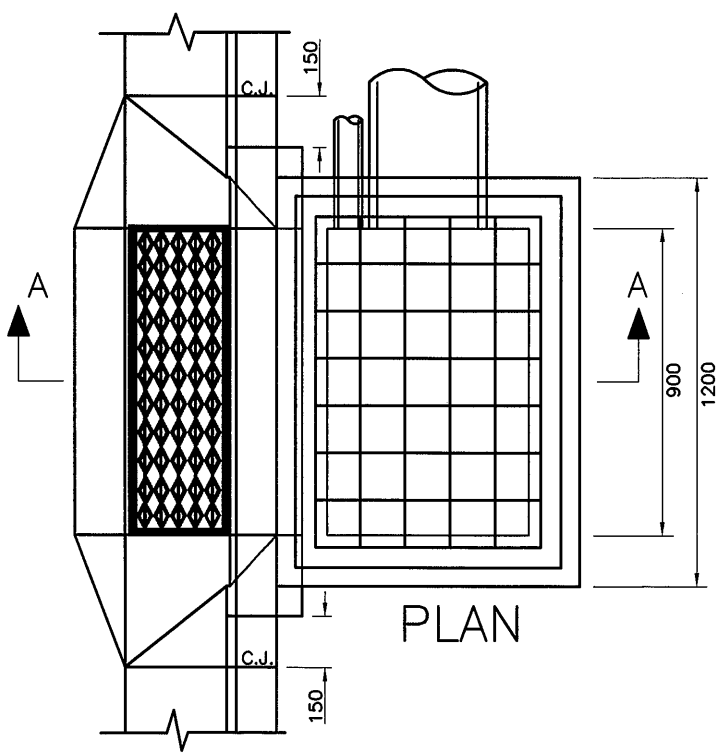
WEAVE GRATE

NOTES:

1. ALL WALLS TO BE 150mm THICK.
2. WHERE PIPE DIA. EXCEEDS PIT WIDTH OR DEPTH EXCEEDS 2.0m REFER TO STD. DRAWING No. S255.
3. WEEPHOLE, 100mm DIA. IN THE WALL UNDER THE KERB & CHANNEL TO BE 100mm BELOW SUBGRADE LEVEL.
4. SHAPE PIT INVERT TO ONE THIRD OUTLET PIPE DIAMETER.
5. GRATE TO COMPLY WITH AS 3996-CLASS D
6. CONTRACTOR IS TO CONFIRM THAT DIMENSIONS OF REQUIRED GRATE SUIT EXISTING CONDITIONS.
7. GRATES TO BE SECURED TO THE FRAME SO THAT THEY WILL NOT "KICK UP" WITH TRAFFIC LOADING.
8. SINGLE PART CAST IRON COVER TO BE HEAVY DUTY WITH A CLEAR OPENING 900x600mm. GATIC B145 OR CABPAC C143-D OR EQUIVALENT.
9. CONCRETE STRENGTH 25MP<sub>a</sub> AT 28 DAYS.
10. PROVIDE STEP IRONS FOR PIT DEPTH EXCEEDING 1.0m, REFER TO STD. DRAWING No. S275.



SECTION A-A



PLAN



COMBINED JUNCTION PIT (900x600) WITH CHUTE ENTRY GRATING COVER (VEHICLE CROSSING)

DRAWN: V. NGUYEN	CHECKED: S.Q	AMENDMENTS: JULY 2014
SCALE: 1:20	DATE: JULY 2014	BY: MURRAY BASILE

APPROVED  
*R. P. D.*  
 For MANAGER  
 ENGINEERING SERVICES  
 DRAWING No.  
**S231**